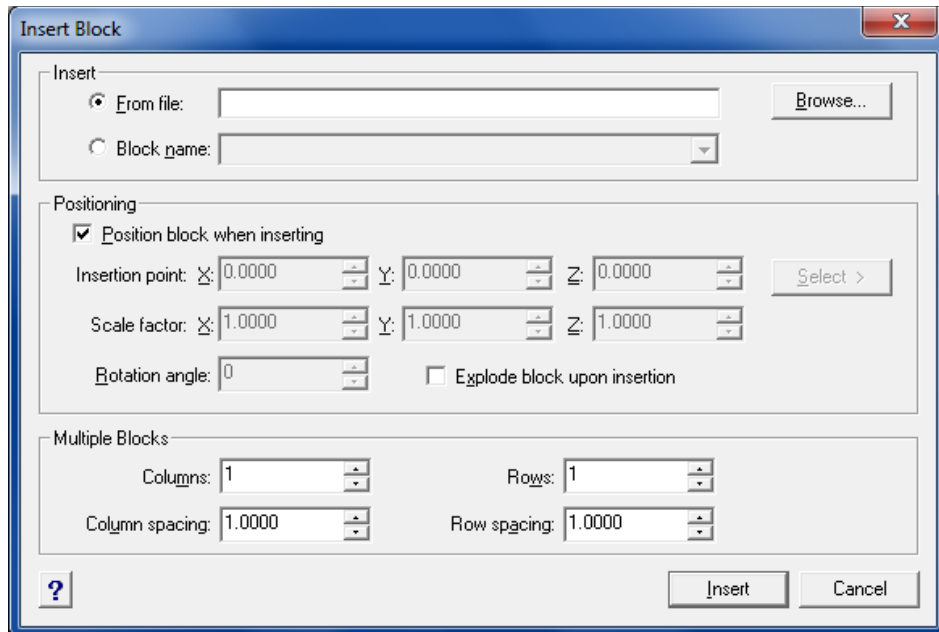


MS1064 Graphic Convention and Typical Structural Components add – on installation:

- After downloading the file, please run setup to install add – on.
- Follow on screen instruction and press finish to end installation.
- In order to insert the drawings as blocks in TiffinCAD ArCADia / TiffinCAD 2011:
 - Type **i** (insert block command) in the **command prompt** to open up the insert block window option (as shown below).



- Click the “From file” radio button, and click Browse to browse the file.
- File location - **C:/Innovacia/MS1064 Graphic Convention and Typical Structural Components:**
 - *Graphic convention* schedule and symbols drawing files are located inside **Graphic Convention** folder.
 - *Typical Structural Components* drawing files are located inside **CIDB JKR Blocks**
- Once selected, click insert to insert block into drawing.
- **NOTE: Drawings blocks may need some adjustments for example drawing.**